



# Founder



Expanding his vision beyond national borders, **Rahul Kumar Yadav** founded PrimeGlobe International, a global trade enterprise specializing in end-to-end Import & Export solutions.

The company is built to simplify international trade for businesses and individuals alike.

**Key Services Include:**

Comprehensive Import & Export operations

Expert logistics coordination and customs clearance







UMmedical UMCT-128X 128-slice CT scanner system for Hospital Privado Luanda Sul, Angola.



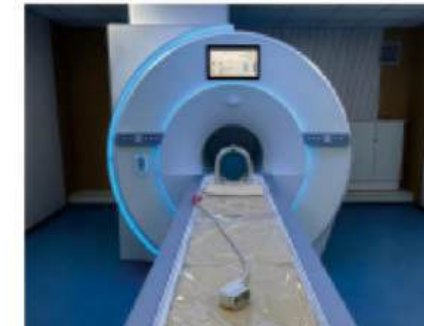
UMmedical veterinary MRI system UMMRI-035 VET for Southvalley Veterinary Clinic in Philippines.



UMmedical 50kW digital x-ray system UMX500D in Nigeria.



UMmedical digital flat panel C-arm systems for a public hospital in Algeria.



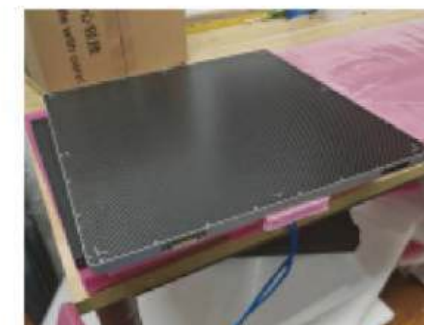
UMY Medical MRI system has been installed in our local hospital and oversea hospital.



UMmedical mobile DR systems (10 sets) UMX-mDR5A for a tender in Philippines.



Doctors in a Ghana hospital are happy with UMmedical UMB-S7 color doppler ultrasound system.



UMY Medical flat panel detector have delivering to many different countries, and get good feedback for the quality.



UMmedical CBCT system UMX1005E has been set up in a dental clinic in Myanmar.



**UMXRAY120**

- ★ Output Power: 50KW
- ★ Power Voltage: 380V±10%
- ★ kV range: 40~150kV
- ★ Max. mA: 630mA
- ★ mAs range: 0.1 ~630mAs
- ★ ms range: 10~5000ms
- ★ Small focus: 0.6 / Large focus: 1.2
- ★ Detector Size: 17X17inch (Wireless)
- ★ Scintillator: CSI
- ★ Pixels: 3072\*3072
- ★ Pixel Pitch (μm): 139
- ★ Resolution: 3.4
- ★ AD Conversion: 16



**UMXRAY124**

- ★ Output Power: 50KW
- ★ Power Voltage: 220V±10%
- ★ kV range: 40~150kV
- ★ Max. mA: 630mA
- ★ mAs range: 0.1 ~630mAs
- ★ ms range: 10~5000ms
- ★ Small focus: 0.6 / Large focus: 1.2
- ★ Detector Size: 17X17inch (Wireless)
- ★ Scintillator: CSI
- ★ Pixels: 3072\*3072
- ★ Pixel Pitch (μm): 139
- ★ Resolution: 3.4
- ★ AD Conversion: 16



**UMX650D**

- ★ Output Power: 65KW
- ★ Power Voltage: 380V±10%
- ★ kV range: 40~150kV
- ★ mA range: 10~800mA
- ★ mAs range: 0.4 ~1000mAs
- ★ Exposure time: 0.001s~10s
- ★ Small focus: 0.6 / Large focus: 1.2
- ★ Detector Size: 17X17inch
- ★ Scintillator: CSI
- ★ Pixels: 3072\*3072
- ★ Pixel Pitch (μm): 139
- ★ Resolution: 3.6
- ★ AD Conversion: 16



**UMXRAY127**

- ★ Output Power: 50KW
- ★ Power Voltage: 380V±10% (220V optional)
- ★ kV range: 40~150kV
- ★ mA range: 10~630mA
- ★ mAs range: 0.4 ~1000mAs
- ★ Exposure time: 0.001s~10s
- ★ Small focus: 0.6 / Large focus: 1.2
- ★ Support AEC, APR automatic exposure
- ★ Diagnostic Self-test and display
- ★ The grid material: Aluminum based grid
- ★ Size: 18×18 inch (48×48cm)
- ★ Grid ratio: 10:1
- ★ Density: 215C



**UMXRAY126**

- ★ Output Power: 50KW
- ★ Power Voltage: 380V±10%
- ★ kV range: 40~150kV
- ★ Max. mA: 630mA
- ★ mAs range: 0.1 ~630mAs
- ★ Exposure time: 0.002s~6.3s
- ★ Small focus: 0.6 / Large focus: 1.2
- ★ Detector Size: 17X17inch
- ★ Scintillator: CSI
- ★ Pixels: 3072\*3072
- ★ Pixel Pitch (μm): 139
- ★ Resolution: 3.6
- ★ AD Conversion: 16



**UMX-iDR50XD**

- ★ Output Power: 50KW
- ★ Power Voltage: 380V±10%
- ★ kV range: 40~150kV
- ★ Max. mA: 630mA
- ★ mAs range: 0.1 ~630mAs
- ★ Exposure time: 0.002s~6.3s
- ★ Small focus: 0.6 / Large focus: 1.2
- ★ Detector Size: 17X17inch
- ★ Scintillator: CSI
- ★ Pixels: 3072\*3072
- ★ Pixel Pitch (μm): 139
- ★ Resolution: 3.6
- ★ AD Conversion: 16



**UMX320D**

- ★ Output Power: 32KW
- ★ Power Voltage: 220V±10%
- ★ kV range: 40~125kV
- ★ mA range: 10~400mA
- ★ mAs range: 0.1 ~320mAs
- ★ Exposure time: 0.001s~10s
- ★ Small focus: 2.0 / Large focus: 2.0
- ★ Detector Size: 17X17inch
- ★ Scintillator: CSI
- ★ Pixels: 3072\*3072
- ★ Pixel Pitch (μm): 139
- ★ Resolution: 3.6
- ★ AD Conversion: 16



**UMX200D**

- ★ Output Power: 20KW
- ★ Power Voltage: 220V±10%
- ★ kV range: 40~125kV
- ★ mA range: 10~250mA
- ★ mAs range: 0.1 ~200mAs
- ★ Exposure time: 0.001s~10s
- ★ Small focus: 1.0 / Large focus: 2.0
- ★ Detector Size: 17X17inch
- ★ Scintillator: CSI
- ★ Pixels: 3072\*3072
- ★ Pixel Pitch (μm): 139
- ★ Resolution: 3.6
- ★ AD Conversion: 16



### UMXRAY056

- ★ Human 32KW/400mA medical x ray machine
- ★ Maximum Output Power: 32 kW
- ★ kV range: 40~150kV
- ★ mA range: 10 ~ 400 mA
- ★ mAs range: 0.1 ~ 400 mAs
- ★ Exposure time: 0.001 ~ 6.3 s
- ★ Input Power: 380 V/3-phase /220V (option)



### UMXRAY059

- ★ Output Power: 50KW
- ★ Power Voltage: 380V±10% (220V optional)
- ★ kV range: 40~150kV
- ★ mA range: 10~630mA
- ★ mAs range: 0.4 ~1000mAs
- ★ Exposure time: 0.001s~10s
- ★ Max tube voltage: 125KV
- ★ wire flat panel detector, desktop computer, vet / human software



### UMXRAY130

- ★ Output Power: 32KW
- ★ Power Voltage: 220V±22V
- ★ kV range: 40~125kV
- ★ mA range: 32~400mA
- ★ mAs range: 0.32 ~400mAs
- ★ Exposure time: 0.002~6.3S
- ★ Small focus: 1.0 / Large focus: 2.0
- ★ Detector Size: 17X17inch(Wireless)
- ★ Scintillator: CSI
- ★ Pixels: 3072\*3072
- ★ Resolution: 3.6
- ★ AD Conversion: 16



### UMXRAY156

- ★ Output Power: 32KW
- ★ Power Voltage: 220V±22V
- ★ kV range: 40~125kV
- ★ mA range: 32~400mA
- ★ mAs range: 0.32 ~400mAs
- ★ Exposure time: 0.002~6.3S
- ★ Small focus: 1.0 / Large focus: 2.0
- ★ Detector Size: 17X17inch(Wired)
- ★ Scintillator: CSI
- ★ Pixels: 3072\*3072
- ★ Resolution: 3.6
- ★ AD Conversion: 16



### UMXRAY081

- ★ VET DR X-RAY 20kw/32kw
- ★ Output Power: 32KW
- ★ Power Voltage: 220V±10%
- ★ kV range: 40~125kV
- ★ mA range: 10~400mA
- ★ mAs range: 0.1 ~320mAs
- ★ Exposure time: 0.001s~10s
- ★ Small focus: 2.0 / Large focus: 2.0
- ★ 4-way floating table



### UMXRAY078

- ★ VET DR X-RAY 20kw/32kw
- ★ Output Power: 32KW
- ★ Power Voltage: 220V±10%
- ★ kV range: 40~125kV
- ★ mA range: 10~400mA
- ★ mAs range: 0.1 ~320mAs
- ★ Exposure time: 0.001s~10s
- ★ Small focus: 2.0 / Large focus: 2.0
- ★ 4-way floating table



### UMXRAY128

- ★ Power: 32kW / 20kW
- ★ Voltage: AC220V ± 10%
- ★ kV Range: 40 ~125kV
- ★ mA Range: 10 ~400mA / 10 ~320mA
- ★ mAs Range: 0.5-320mAs
- ★ Working Frequency: ≥100kHz
- ★ Exposure time: 0.002S ~6.3S
- ★ Focus: 0.6 mm / 1.2 mm
- ★ Detector size: 17\*17 inch (Wireless is optional)
- ★ Scintillator: Csl
- ★ Pixel Size: 139um
- ★ Spatial Resolution: Min. 3.4 lp/mm



### UMX-mR32 / UMX-mR20

- ★ Power: 32kW / 20kW
- ★ Voltage: AC220V ± 10%
- ★ kV Range: 40 ~125kV
- ★ mA Range: 10 ~400mA / 10 ~320mA
- ★ mAs Range: 0.5-320mAs
- ★ Working Frequency: ≥100kHz
- ★ Exposure time: 0.002S ~6.3S
- ★ Focus: 0.6 mm / 1.2 mm



**UMXRAY087** 

- ★ Power: 8kW
- ★ Voltage: AC220V ± 10%
- ★ kV Range: 40~125kV
- ★ mA Range: 5~160mA
- ★ mAs Range: 0.1-200mAs
- ★ Working Frequency: 100kHz
- ★ Exposure time: 0.0032S~10S
- ★ Single Focus: 2.0 mm



**UMXRAY086** 

- ★ Maximum Power: 5.6kW
- ★ Power Supply: AC110/220V±10%, 50/60Hz±1Hz
- ★ mA adjustable range : 5~100 mA
- ★ mAs adjustable range: 0.1~320 mAs
- ★ kV adjustable range: 40kV~125kV
- ★ Exposure time: 1ms~10000ms
- ★ X-ray tube focus: 0.6mm/1.8mm



**UMXRAY034** 

- ★ Nominal Power : 450W
- ★ Power Voltage: 220V±22V
- ★ kV range: 40~90kV
- ★ mA range: 2~5mA
- ★ Focal spot 0.8mm
- ★ Anode Disk Target Angle: 19°
- ★ Communication : RS232/WIFI



**UMXRAY031** 

- ★ Nominal Power : 210W
- ★ Power Voltage: 220V±22V
- ★ kV range: 40~70kV
- ★ mA range: 1~3mA
- ★ Focal spot 0.4mm
- ★ Anode Disk Target Angle: 12°
- ★ Communication: RS232/WIFI



**UMXRAY070** 

- ★ Power: 5kW
- ★ Voltage: AC220V ± 10%
- ★ kV Range: 40-110KV
- ★ mA Range: 32mA-100mA
- ★ mAs Range: 0.32-315mAS
- ★ Exposure time: 0.01-6.3s



**UMXRAY084** 

- ★ Power: 5kW
- ★ Voltage: AC220V ± 10%
- ★ kV Range: 40~125kV
- ★ mA Range: 10~100mA
- ★ mAs Range: 1-100mAs
- ★ Exposure time: 01-1000ms
- ★ Focus: 0.6 / 1.8 mm



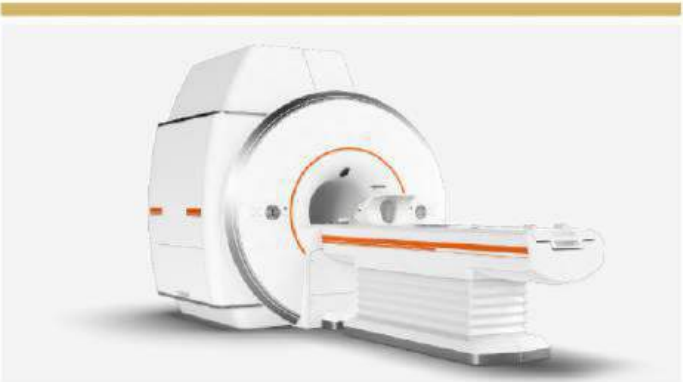
**UMARMO43** 


- ★ Output Power: 5KW
- ★ Power Voltage: 220V±22V
- ★ kV range: 40~125kV
- ★ mA range: 6.3~100mA
- ★ mAs range: 0.2 ~100mAs
- ★ ms range: 10~16000ms
- ★ Small focus: 0.3 / Large focus: 0.6
- ★ Detector Size: 9X9inch
- ★ Scintillator: CSI
- ★ Pixels: 1024\*1024
- ★ Resolution: 2.5
- ★ Pixel Pitch (μm): 205



**UMDX008** 


- ★ Charger input voltage and frequency: 220V~50Hz
- Dental x-ray machine
- ★ X-ray Tube: Canon D-045
- X-Ray focus: 0.4mm
- leakage radiation rate: ≤0.1mGy/h at 1 meter
- relative humidity: 30%RH~75%R
- ★ tube voltage: 70kV±10%
- ★ tube current: 2mA+\_20%



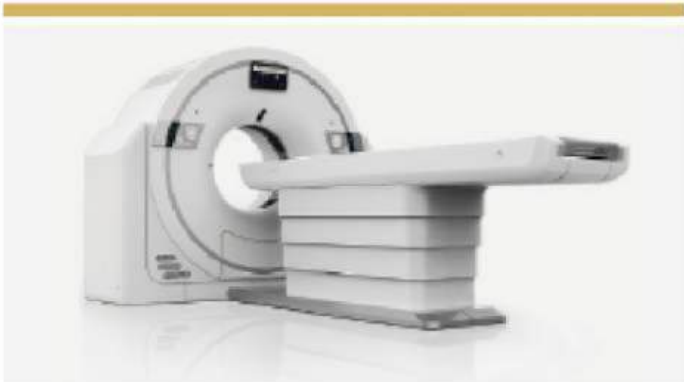
**UMMRIO33** 

- ★ Magnet type: Permanent magnet (Automatic constant temperature system)
- ★ 1.5T
- ★ Magnet appearance: Cycle
- ★ Shimming method: Passive+Active
- ★ Homogeneity: 10ppm 45cm DSV, Vp-p
- ★ SGS line: 4.0m\*2.5m
- ★ Patient Space: 600m
- ★ Gradient system



**UMMRI-150** 

- ★ Superconducting magnet
- ★ 1.5T active shield superconducting magnet
- ★ Gradient System RF System
- ★ Spectrometer
- ★ All-digital
- ★ Various sequences
- ★ Receiving Channel: 8
- ★ Receiving Coil: Phased Array Coils



**UMCT150** 

- ★ 32 Slice 32 Row Scanner
- ★ 32-row detector acquisition
- ★ Maximum power of high-voltage generator: 42kW
- ★ Output tube current: 10-350mA
- ★ 5 types collimated adaptive filters
- ★ Monitor: 27" liquid crystal display, resolution: 3840\*2160 (4K)



**UMCT151** 

- ★ 64 Slice 32 Row Scanner
- ★ Numbers of detector rows: 32
- ★ Gantry tilt mode: Mechanical gantry tilt
- ★ Width of Z-axis detector: 20mm
- ★ Tube mA range: 10~420mA
- ★ Minimum 360-degree rotation time: 0.5s



**UMMRI-040A** 

- Magnet system**
- ★ Large openness structure
  - ★ A-Shimming technology
  - ★ Intelligent temperature control
- Gradient system**
- ★ Advanced Gradient coils
  - ★ Self-shielding technology
  - ★ Eddy-'0' technology, extremely reduce eddy currents
  - ★ Air cooling gradient coils and amplifier
- Computer System**
- ★ DIS system
  - ★ Host computer
  - ★ Color LCD Monitor



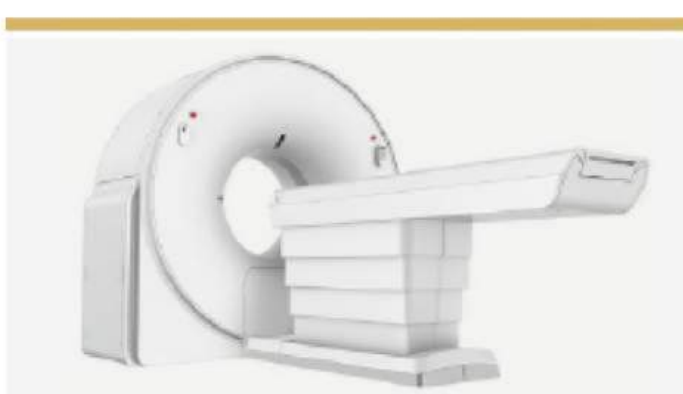
**UMMRI-035** 

- ★ Magnet Type: Full open, eddy current free, self-constant temperature, permanent Nd-Fe-B magnet
- ★ Field Strength: 0.35T
- ★ Spectrometer: Full Digital
- ★ Receiving Channel: 4
- ★ Receiving Coil: Phase Array Coils
- ★ Comprehensive scanning sequence and advanced imaging techniques
- ★ Clinical application system



**UMCT-64N** 

- ★ The gantry ring is designed to change colors to inform the patient what phase of the scan they are in. This keeps them aware and informed, reducing anxiety.
- ★ LCD navigation integrated into the gantry provides a real-time, accurate display of current working status, patient information, breathing navigation as well as ECG and scanning parameters.
- ★ Entertaining graphics amuse the patient and put them at ease. This is especially effective with pediatric patients.
- ★ The bold new design of the control panels includes larger knobs which are easier to operate
- ★ Quad-Sampling: By dynamically moving the focal spot axially and longitudinally, sampling density is increased 400%, thus having improved resolution, reduced artifact and extended scanning ranges.



**UMCT755** 

- ★ Power: 32 kW
- ★ Gantry Bore: 70 cm
- ★ Scan Speed: 47 mm/s
- ★ 20 mm Z-axis coverage, 32 slices per rotation.
- ★ The detector guarantees sufficient sampling per rotation with low afterglow and reduced artifacts.
- ★ 1024 x 1024 Mega-pixel matrix fully displays details of lesions.
- ★ NanoDose Iterative (NDI) and intelligent mA (imA) algorithms enable lower dose while preserving image quality.
- ★ AI-empowered workflow provides easy and comfortable operation.
- ★ 70 kV low dose protocol is available for pediatric scanning.
- ★ Robust hardware allows the system to run stably.



### UMMAMMO154



- ★ Digital Breast X-Ray Machine
- ★ High voltage cable :9m
- ★ Target Material: Molybdenum (Mo)
- ★ Total power:5kw
- ★ Kv: 20-40kv
- ★ mA:10~160mA
- ★ Exposure time:50ms~10s
- ★ Focus: 0.1mm/0.3mm
- ★ Filtration: Mo (0.03mm)



### UMX980D



- ★ Power Rating: 6.2kW
- ★ Focal Spot Size: Dual Focus 0.2 / 0.4mm
- ★ Target Material: Molybdenum (Mo)
- ★ Port Material: Beryllium (Be)
- ★ High-speed Anode Drive: 2800rpm
- ★ Target Angle: 12°
- ★ Anode Heat Storage: 80kJ (110KHU)
- ★ Anode Cooling: Air Cooling
- ★ Filtration: Mo (0.03mm)



### UMCBCT001



#### Pano

- ★ Provide you with high diagnosis accuracy and better treatment on diseases of the full dentition and jaw.
- ★ Easy to get HD panoramic images by building a perfect tomographic track: combined with the motion of the X, Y and Sita axis: jaw.

#### CT

- ★ A versatile helper to clearly display patient's anatomical structure with flexible FOV.
- ★ Intelligent imaging technology makes free observation from any angle realizable.
- ★ Accurate measurement of the distance, area, volume and outline contour makes the one-key panoramic image obtained from the 3D image simple and easy.

#### Cephalometric

- ★ Othodontic specialist's best choice making orthodontic treatment and maxillofacial surgery efficient and accurate.
- ★ Low-dose radiation and high gray realized by dual-level alignment adjustment to provide you with HD cephalometric images..



### UMDX002



- ★ Power supply: AC: 220V±10%, 50Hz, 1KVA
- ★ Tube voltage: 60kVp
- ★ Tube current: 8mA
- ★ Focus size: 1.5mm
- ★ Total filtration: 2.5mmAL
- ★ Exposure time: 0.2 - 4sec
- ★ Leak radiation: Outside one meter ≤ 0.002mGy/h (National standard: 0.25mGy/h)
- ★ Optional: 0.5mA Focus size: 0.8mm



### UMX-DM98B



- ★ Power Rating: 6.2kW
- ★ Focal Spot Size: Dual Focus 0.2 / 0.4mm
- ★ Target Material: Molybdenum (Mo)
- ★ Port Material: Beryllium (Be)
- ★ High-speed Anode Drive: 2800rpm
- ★ Target Angle: 12°
- ★ Anode Heat Storage: 80kJ (110KHU)
- ★ Anode Cooling: Air Cooling
- ★ Filtration: Mo (0.03mm)
- ★ Detector Material: Amorphous Silicon
- ★ Detector Size: 24cm×30cm
- ★ Pixel Matrix: 2816×3528
- ★ Limit Of Spatial Resolution: 6.0Lp/mm
- ★ DQE Value: @4 Lp/mm:≥35%
- ★ Dynamic Range: 14bit Digital Output
- ★ Pixel Size: 85µm



### UMX-DM300



- ★ Tube voltage Range: 20 kV ~ 40 kV in 1 kV step
- ★ Max Output: 4 kW
- ★ Max tube voltage:40kV
- ★ Max tube current: 140mA
- ★ Anode Type: Molybdenum;
- ★ Focal Spot Size: 0.1 mm (Small)/ 0.3 mm (Large)
- ★ Permanent filtration: 0.5mmBe
- ★ Max anode speed: 10000rpm/min;
- ★ Maximun tube assembly heat content: 320 KJ



### UMDX008



- ★ Charger input voltage and frequency: 220V~50Hz
- ★ X-ray Tube: Canon D-045
- ★ X-Ray focus: 0.4mm
- ★ Leakage radiation rate: ≤0.1mGy/h at 1 meter
- ★ Relative humidity: 30%RH~75%RH
- ★ Tube voltage: 70kV±10%
- ★ Tube current: 2mA+20%
- ★ Anode angle: 12.5°
- ★ Exposure time adjustment range : 0.04S-2.0S
- ★ Stand model comes standard with remote control



### UMDS002



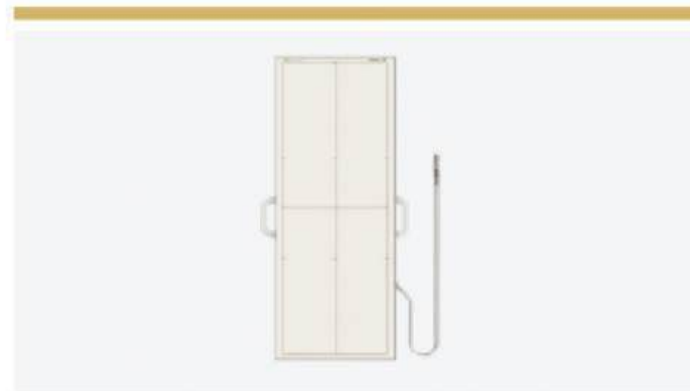
- ★ Operating Voltage:5VDC
- ★ Input power:500mw
- ★ Spatial Resolution:≥7Lp/mm
- ★ Leakage radiation rate: ≤0.1mGy/h at 1 meter
- ★ Image uniformity:≤2%
- ★ Effective image area: 25\*30mm
- ★ Sensor Size: 37.16mmx32mmx6mm
- ★ Anode angle: 12.5°
- ★ Adaptor Size: 113.66mmx40mmx15.8mm
- ★ Total Cable Length: 3 m(sensor cable + control box cable to PC)



### UMFPD-V1717X



- ★ Detector Technology: Amorphous Silicon
- ★ Scintillator: CsI
- ★ Active Area (inch): 17 × 17
- ★ Pixel Matrix: 3072 × 3072
- ★ Pixel Pitch (μm): 139
- ★ Limiting Resolution (lp/mm): 3.4
- ★ AD Conversion (bit): 16
- ★ Power Dissipation (W): 30
- ★ Data Interface: GigE



### UMFPD-V1748V



- ★ Detector Technology: Amorphous Silicon
- ★ Scintillator: CsI
- ★ Active Area (inch): 17 × 48
- ★ Pixel Matrix: 3064 × 8696
- ★ Pixel Pitch (μm): 139
- ★ Limiting Resolution (lp/mm): 3.4
- ★ AD Conversion (bit): 16
- ★ Data Interface: GigE
- ★ Trigger Mode: AED / Software



### UMFPD-M1717V



- ★ Detector Technology: Amorphous Silicon
- ★ Scintillator: CsI
- ★ Active Area (inch): 17 × 17
- ★ Pixel Matrix: 3072 × 3072
- ★ Pixel Pitch (μm): 139
- ★ Limiting Resolution (lp/mm): 3.4
- ★ AD Conversion (bit): 16
- ★ Battery Life (h): 8
- ★ WIFI: 2.4G and 5G, IEEE802.11 a/b/g/n/ac
- ★ Trigger Mode: AED (Optional) / Software



### UMFPD-M1417V



- ★ Detector Technology: Amorphous Silicon
- ★ Scintillator: CsI
- ★ Active Area (inch): 14 × 17
- ★ Pixel Matrix: 2304 × 2800
- ★ Pixel Pitch (μm): 150
- ★ Limiting Resolution (lp/mm): 3.4
- ★ AD Conversion (bit): 16
- ★ Battery Life (h): 8
- ★ WIFI: 2.4G and 5G, IEEE802.11 a/b/g/n/ac
- ★ Trigger Mode: AED (Optional) / Software



### UMFPD-V1012V



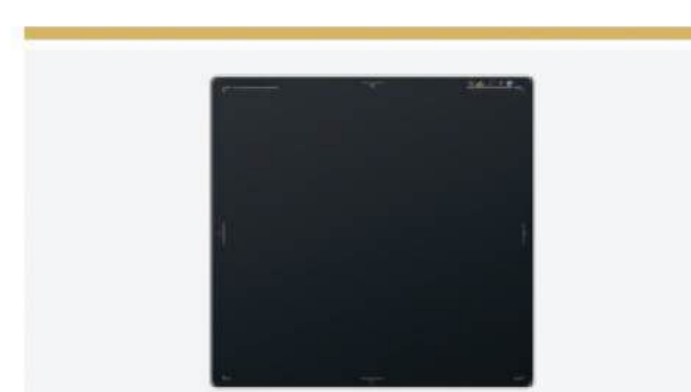
- ★ Detector Technology: Amorphous Silicon
- ★ Scintillator: CsI
- ★ Active Area (inch): 10 × 12
- ★ Pixel Matrix: 2000 × 2400
- ★ Pixel Pitch (μm): 125
- ★ Limiting Resolution (lp/mm): 4
- ★ AD Conversion (bit): 16
- ★ Power Dissipation (W): 20
- ★ Data Interface: GigE



### UMFPD-V1012VD



- ★ Detector Technology: Amorphous Silicon
- ★ Scintillator: CsI
- ★ Active Area (inch): 10 × 12
- ★ Pixel Matrix: 2000 × 2400
- ★ Pixel Pitch (μm): 125
- ★ Limiting Resolution (lp/mm): 4
- ★ AD Conversion (bit): 16
- ★ Power Dissipation (W): 18
- ★ Data Interface: GigE



### UMFPD-M1717X



- ★ Detector Technology: Amorphous Silicon
- ★ Scintillator: CsI
- ★ Active Area (inch): 17 × 17
- ★ Pixel Matrix: 4267 × 4267
- ★ Pixel Pitch (μm): 100
- ★ Limiting Resolution (lp/mm): 4.3
- ★ AD Conversion (bit): 16
- ★ Battery Life (h): 8
- ★ WIFI: 2.4G and 5G, IEEE802.11 a/b/g/n/ac
- ★ Trigger Mode: AED (Optional) / Software



### UMFPD-L1012X



- ★ Detector Technology: Flexible
- ★ Scintillator: CsI
- ★ Active Area (inch): 10 × 12
- ★ Pixel Matrix: 2502 × 3152
- ★ Pixel Pitch (μm): 100
- ★ Limiting Resolution (lp/mm): 4.3
- ★ AD Conversion (bit): 16
- ★ Battery Life (h): 8.5
- ★ WIFI: 2.4G and 5G, IEEE802.11 a/b/g/n/ac
- ★ Trigger Mode: AED (Optional) / Software



**UMFPDO26**



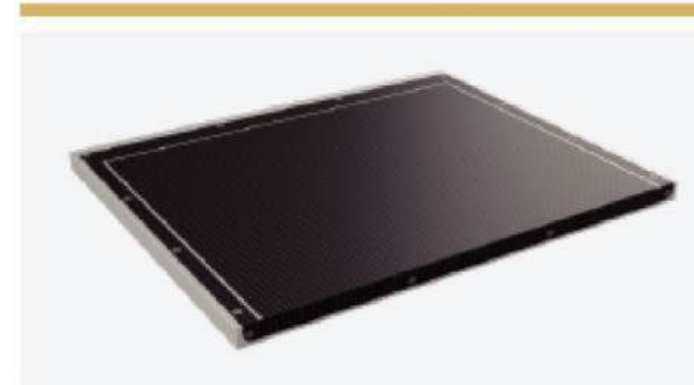
- ★ Detector Technology: Amorphous Silicon
- ★ Scintillator: CsI
- ★ Active Area (inch): 17 × 17(Wired)
- ★ Pixel Matrix: 3072 × 3072
- ★ Pixel Pitch (μm): 139
- ★ Limiting Resolution (lp/mm): 3.6
- ★ AD Conversion (bit): 16
- ★ Power Dissipation (W): 25
- ★ Data Interface: GigE



**UMFPD-D1717V**



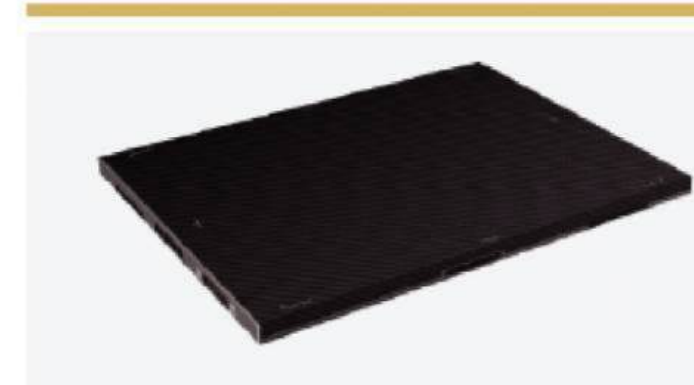
- ★ Detector Technology: Amorphous Silicon
- ★ Scintillator: CsI
- ★ Active Area (inch): 17 × 17
- ★ Pixel Matrix: 3072 × 3072
- ★ Pixel Pitch (μm): 139
- ★ Limiting Resolution (lp/mm): 3.6
- ★ AD Conversion (bit): 16
- ★ Data Interface: Optical Fiber



**UMFPDO19**



- ★ Detector Technology: Amorphous Silicon
- ★ Scintillator: CsI
- ★ Active Area (inch): 10 × 12
- ★ Pixel Matrix: 2762 × 3408
- ★ Pixel Pitch (μm): 85
- ★ Limiting Resolution (lp/mm): 6
- ★ AD Conversion (bit): 16
- ★ Dynamic Range (dB): >76
- ★ Chest Wall Distance (mm): ≤ 3
- ★ Trigger Mode: AED / Software



**UMFPD-R1012X**



- ★ Detector Technology: Amorphous Silicon
- ★ Scintillator: CsI
- ★ Active Area (inch): 10 × 12
- ★ Pixel Matrix: 2816 × 3528
- ★ Pixel Pitch (μm): 85
- ★ Limiting Resolution (lp/mm): 6
- ★ AD Conversion (bit): 16
- ★ Dynamic Range (dB): >76
- ★ Chest Wall Distance (mm): ≤ 3
- ★ Trigger Mode: Outer / Software / Prep



**UMFPDO27**



- ★ Detector Technology: Amorphous Silicon
- ★ Scintillator: CsI
- ★ Active Area (inch): 17 × 17(Wireless)
- ★ Pixel Matrix: 3048 × 4328
- ★ Pixel Pitch (μm): 139
- ★ Limiting Resolution (lp/mm): 3.6
- ★ AD Conversion (bit): 16
- ★ Power Dissipation (W): 25
- ★ Data Interface: 2.5GigE



**UMFPD-D1748V**



- ★ Detector Technology: Amorphous Silicon
- ★ Scintillator: CsI
- ★ Active Area (inch): 17 × 17
- ★ Pixel Matrix: 3024 × 8656
- ★ Pixel Pitch (μm): 139
- ★ Limiting Resolution (lp/mm): 3.6
- ★ AD Conversion (bit): 16
- ★ Power Dissipation (W): 30
- ★ Data Interface: 2.5GigE



**UMFPD-R1012F**



- ★ Detector Technology: Amorphous Silicon
- ★ Scintillator: CsI
- ★ Active Area (inch): 10 × 12
- ★ Pixel Matrix: 2816 × 3528
- ★ Pixel Pitch (μm): 85
- ★ AD Conversion (bit): 16
- ★ Dynamic Range (dB): >76
- ★ Chest Wall Distance (mm): ≤ 3
- ★ Trigger Mode: Outer / Software / Prep



**UMFPD-R1012P**



- ★ Detector Technology: CMOS
- ★ Scintillator: CsI
- ★ Active Area (inch): 10 × 12
- ★ Pixel Matrix: 4681 × 5905
- ★ Pixel Pitch (μm): 50
- ★ AD Conversion (bit): 16
- ★ Dynamic Range (dB): >73
- ★ Chest Wall Distance (mm): ≤ 3
- ★ Trigger Mode: Prep

**Dry Film Printer** €€

- ★ Model: UMPRINTER105
- ★ Single tray
- ★ Film size: 8"×10", 10"×12", 11"×14", 14"×17"



**Ink Printer** €€

- ★ Model: UMINKP001
- ★ Film size: 3" × 17", 11" × 14", 10" × 12", 8" × 10"



**Medical Dry Film** €€

- ★ 8 x 10 in.(20 x 25 cm) 100 sheets/box, 5 boxes/carton
- ★ 10 x 12 in.(25 x 30 cm) 100 sheets/box, 5 boxes/carton
- ★ 11 x 14 in.(28 x 35 cm) 100 sheets/box, 5 boxes/carton
- ★ 14 x 17 in.(35 x 43 cm) 100 sheets/box, 5 boxes/carton



**X-ray Dosimete** €€

- ★ Model: UMX1628A



**Lead Glass** €€

- ★ Model: UMX1613
- ★ Lead equivalent: 1/2/3/4/5 mmpb
- ★ Size: Customized



**Lead Door** €€

- ★ Model: UMX1525
- ★ Lead equivalent: 1/2/3/4/5 mmpb
- ★ Size: Customized



**X-ray Tube** ISO

- ★ UMTUBE001
- ★ Both Chinese or Toshiba tubes are available for choice



**X-ray Generator** ISO

- ★ UMX-GY Series
- ★ 20kW / 32kW / 40kW / 50kW / 65kW / 80kW



**X-ray Collimator** ISO

- ★ UMX-XSQ Series



**Lead Sheet** €€

- ★ Model: UMX1536
- ★ Thickness: 1-20mm
- ★ Size: Customized



**Lead Screen** €€

- ★ Model: UMX1606 / UMX1608 / UMX1609
- ★ Size: Single / Double / Triple



**Lead Jacket** €€

- ★ Model: UMX1507
- ★ 0.35mmpB/0.5mmPb
- ★ Size: M/L/XL



**Chest Stand** ISO

- ★ Model: UMX1807
- ★ Manual lift



**Chest Stand** ISO

- ★ Model: UMX1807M
- ★ Mobile



**Radiography Table** ISO

- ★ UMBED102
- ★ Overall size: 2000\*730\*695mm
- ★ With cassette or flat panel detector holder.
- ★ Four all-direction wheels with brakes.



**Lead Apron** €€

- ★ Model: UMX1513
- ★ 0.35mmpB/0.5mmPb
- ★ Size: M/L/XL



**Lead Collar** €€

- ★ Model: UMX1516
- ★ 0.35mmpB/0.5mmPb



**Lead Gloves** €€

- ★ Model: UMX1521
- ★ 0.35mmpB/0.5mmPb



**Auto Film Developer** €€

- ★ Model: UMX1501
- ★ Chemical tank volume: 5.2l
- ★ Capacity: 80pcs/h (14\*17 inch)



**Film / Cassette** €€

- ★ Model: UMX1619 / UMX1707
- ★ Size (inch): 5\*7/8\*10/10\*12/11\*14/12\*15/14\*17/17\*17



**Film Viewer** €€

- ★ UMX-GPD Series (LED)
- ★ Single/double/triple/quadruple



**Breat Protection** €€

- ★ Model: UMX1529
- ★ 0.35mmpB/0.5mmPb



**Lead Glasses** €€

- ★ Model: UMX1603
- ★ 0.35mmpB/0.5mmPb



**Protective Mask** €€

- ★ Model: UMX1532
- ★ 0.1mmpB





# Medical Equipments



## Our core products include:

Ultrasonic laminating machines Ultrasonic slitting machines

Disposable product production equipment

(disposable bouffant cap machines, disposable shoe cover machines, disposable folding machines, automatic sanitary napkin machines, etc.),

Ultrasonic lace machines, Ultrasonic welding machines and other garment processing equipment.

These products are widely used in electronics, automotive, medical devices, garment processing, home textiles industry and other fields.

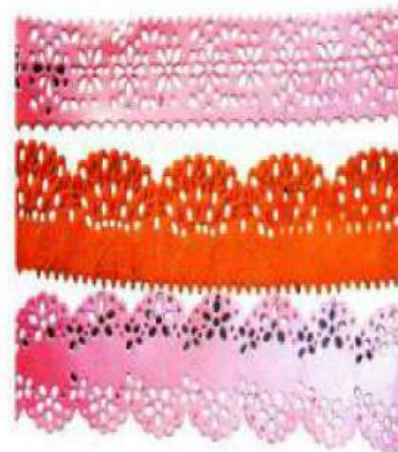
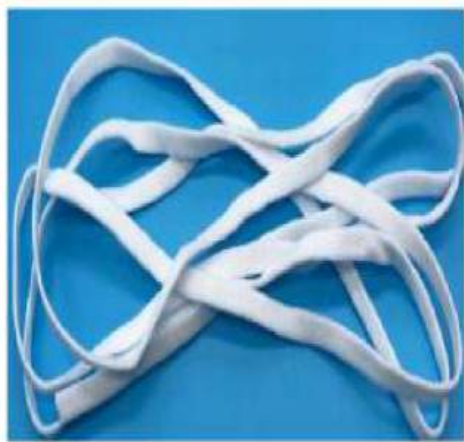
The company owns a number of patented technologies, and its products are exported to more than 30 countries and regions including Europe, America and Southeast Asia.

We are committed to providing professional services to customers worldwide.





# ULTRASONIC SEWING EQUIPMENT SERIES



## ULTRASONIC SEWING EQUIPMENT SERIES



Manual Non Woven Bag Machine

Single Head Ultrasonic Spot Welding  
Machine

Double Head Ultrasonic Spot Welding Machine

Non Woven Bag D Punching Machine

Tape Cutting Machine

Non Woven T-shirt Bag Punching Machine

Ultrasonic Flour Bag Sewing Machine

Digital Ultrasonic Sewing Machine

100MM Ultrasonic Sewing Machine

200MM Ultrasonic Sewing Machine

300MM Ultrasonic Sewing Machine

Ultrasonic Underwear Sewing Machine

Ultrasonic Surgical Clothes Sewing Machine

Ultrasonic Tape Cutting Machine

Radial Wave Ultrasonic Sewing Machine

Ultrasonic Surgical Gown Sewing Machine



# HOME TEXTILE GARMENT EQUIPMENT SERIES

# HOME TEXTILE GARMENT EQUIPMENT SERIES



Ultrasonic Quilting Machine (Analog Box)

Ultrasonic Quilting Machine (Digital Box)

Ultrasonic Quilting Machine (Pneumatic)

Ultrasonic Quilting and Cutting Machine

Ultrasonic Quilting and Cold Knife  
Cutting Machine

Ultrasonic Cutting Machine

Ultrasonic Bed Cutting Machine (For Thick Material)

Ultrasonic Towel Cutting Machine

Cold Knife Cutting Machine

Ultrasonic Bed Surround Hemming Embossing Machine

# LABOUR PROTECTION EQUIPMENT SERIES



**Nonwoven Bouffant Cap Machine**

**Servo Nonwoven Bouffant Cap Machine(Size Adjustable)**

**Nonwoven Shoe Cover and Package Machine**

**Plastic Shoe Cover Machine**

**Nonwoven Sleeve Machine**

**Nonwoven Arc Glove Machine**

**Manual Ice Silk Mask Machine**

**Nonwoven Pet Footcover Machine**

**Christmas Hat Making Machine**

**Ear Cover Microphone Cover Machine**

**Nonwoven Bouffant Cap and Package Machine**

**Nonwoven Shoe Cover Machine**

**Plastic Shower Cap /Bowl Cover Machine**

**Servo Plastic Bouffant Cap Machine(Size Adjustable)**

**Nonwoven Glove Machine**

**Nonwoven Shorts Machine**

**Nonwoven Shorts Machine**

**Nonwoven Beard Cover Machine**

**Compress and Sealing Machine**

**Ultrasonic Towel Tearing Machine**



# LABOUR PROTECTION EQUIPMENT SERIES





# MEDICAL EQUIPMENT SERIES



# MEDICAL EQUIPMENT SERIES



Ultrasonic Surgical Gown Sewing Machine

Nonwoven Doctor Cap Machine

Tie on Mask Machine

KF94 Fish-type Mask Machine (1+1)

KN95 Blank Mask Machine (1+1)

KN95 Edge Sealing Machine

Manual Sanitary Pad Machine

Automatic Sanitary Pad Machine

Surgical Clothes Sleeve Machine

Nonwoven Nursing Pad Machine

Face Mask Machine (1+1)

Manual KN95 Mask Machine

KN95 Earloop Welding Machine

Nonwoven Boot Cover Machine

Semi Automatic Sanitary Pad Machine

Sanitary Pad Machine (with Folding Device)



# HOTEL EQUIPMENT SERIES



# HOTEL EQUIPMENT SERIES



Plastic Shower Cap /Bowl Cover Machine Disposable Slipper Machine

Nonwoven Toilet Machine/Steering Wheel Cover Machine Bedsheet Folding Machine

Disposable Slipper Machine



# ULTRASONIC SPARES SERIES



# ULTRASONIC SPARES SERIES



Ultrasonic System

Radial Ultrasonic System

Ultrasonic Roller

Ultrasonic Roller Horn Transducer

Nonwoven Material



## Corporate Office



32D Nepal Bhattacharjee 1st Lane  
Near Rashbehari Crossing Shitla Mandir  
Kolkata 700026



+91 98317-49666



[info@primeglobeintl.com](mailto:info@primeglobeintl.com)



<https://primeglobeintl.com>

## Branch

No.5-4308, Xingguangyao  
Square,  
Changjiang Dong Road  
zhongshan  
District Dalian City, China

